

GEORGE BUSH BOULEVARD BASCULE BRIDGE REPLACEMENT

PROJECT DEVELOPMENT & ENVIRONMENT (PD&E) STUDY

JANUARY 2026



PROJECT INFORMATION

Palm Beach County is conducting a Project Development and Environment (PD&E) Study for the George Bush Boulevard Bascule Bridge. The bridge is a vital connection across the Intracoastal Waterway in Delray Beach. Built in 1949, the bascule bridge has a vertical clearance of 9.9 feet at the center of the span and a horizontal clearance of 91.8 feet.

The anticipated project limits along George Bush Boulevard are from NE 9th Avenue on the west side of the Intracoastal Waterway to Andrews Ave on the east side. The bridge connects downtown Delray Beach to nearby barrier island communities and supports vehicle, bicycle, and pedestrian traffic.



Figure 1. George Bush Boulevard Bascule Bridge

The 77-year-old bridge has surpassed its useful life and is considered functionally obsolete due to the substandard roadway width. The U.S. Coast Guard (USCG) has accepted the role of Lead Federal Agency for this study.

PROJECT LOCATION

The project is the George Bush Boulevard Bridge (No. 930026), from NE 9th Avenue to Andrews Avenue, in Delray Beach, FL.

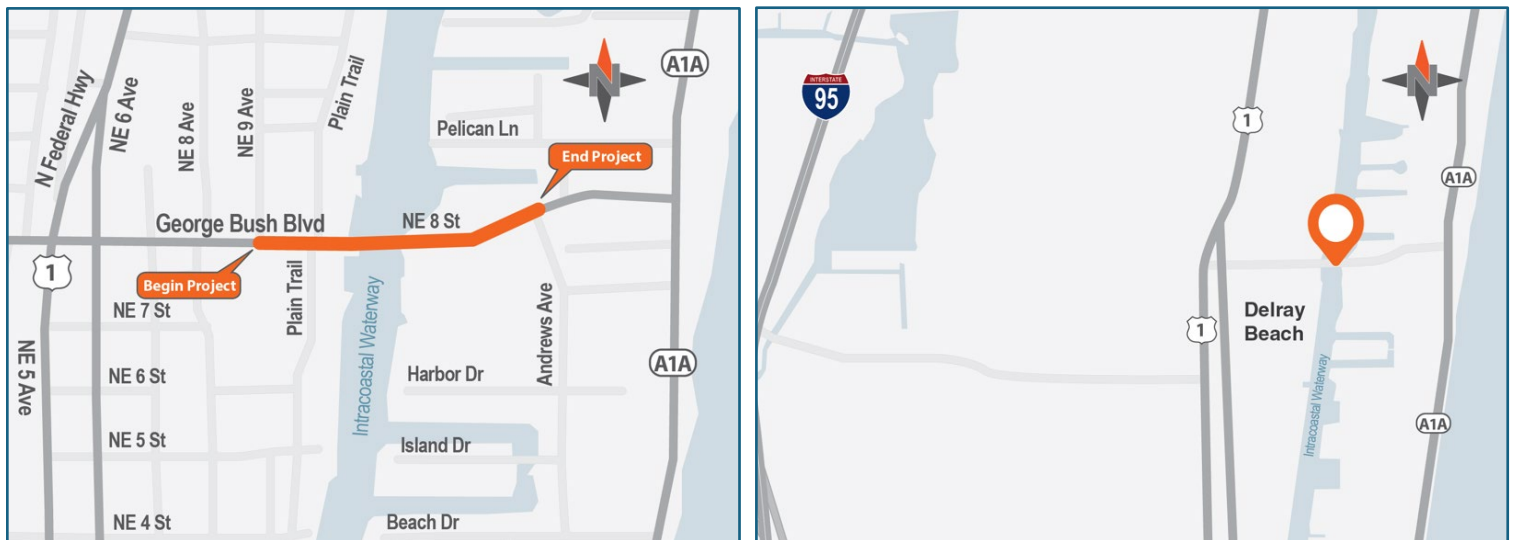


Figure 2. Project Map

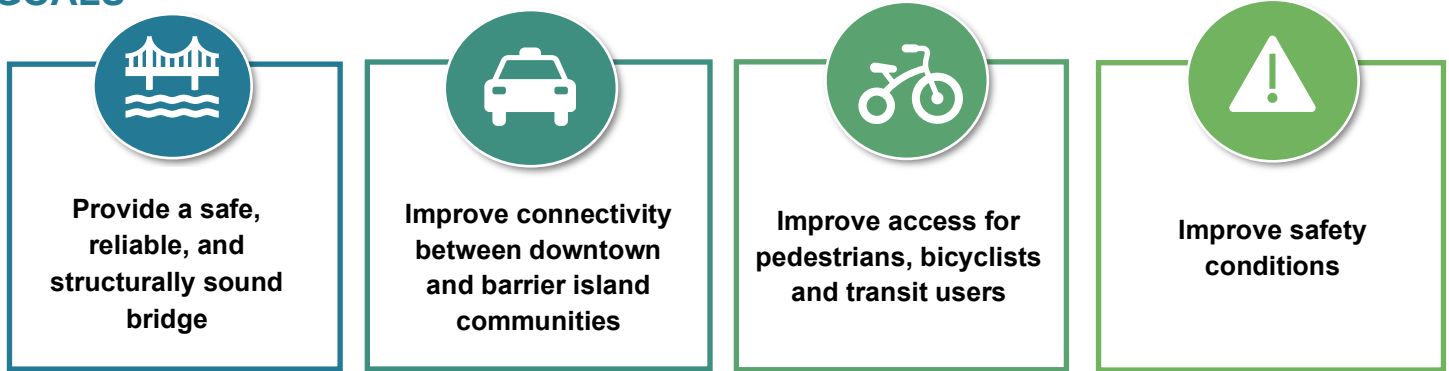
GEORGE BUSH BOULEVARD BASCULE BRIDGE REPLACEMENT

PROJECT DEVELOPMENT & ENVIRONMENT (PD&E) STUDY

WHY IS THIS STUDY NEEDED

The primary purpose of this study is to evaluate the condition of the aging George Bush Boulevard Bridge (Bridge No. 930026) and to develop alternatives to preserving this very important crossing. Palm Beach County is considering repair, rehabilitation, and replacement alternatives to improve the bridge's capacity, reliability, and overall safety while maintaining its critical role as a designated hurricane evacuation route. Alternatives include a new bascule bridge with enhanced facilities for vehicles, pedestrians, cyclists, and transit users, designed in accordance with Americans with Disabilities Act of 1990 (ADA) requirements. Wider shoulders, sidewalks separated by raised barriers, and traffic operation enhancements along the corridor will also be evaluated as part of the study.

GOALS



PROJECT TIMELINE

The PD&E study started in May 2025 and is expected to be completed by March 2029. Schedule is subject to change.



STAY CONNECTED

Your voice matters! Stay engaged as the study progresses. If you have any questions about the project or would like to be added to the project mailing list, please contact:

Michael Sileno, PE
Consultant Project Manager



Phone: (954) 495-0566 | Email: msileno@hardestyhanover.com



Scan the QR code for more details or visit the project website here: georgebushblvdbridge.com